

# Vyšehrad 612



## Byt A4.4 II.

DISPOZICE

PRODEJNÍ PLOCHA BYTU

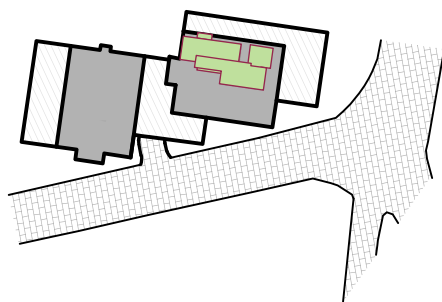
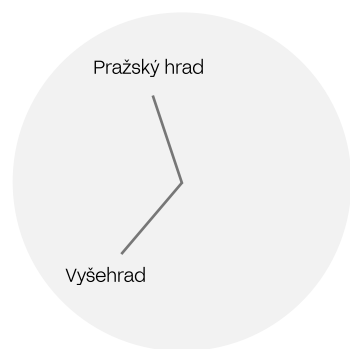
2+kk

59,7 m<sup>2</sup>

# V612

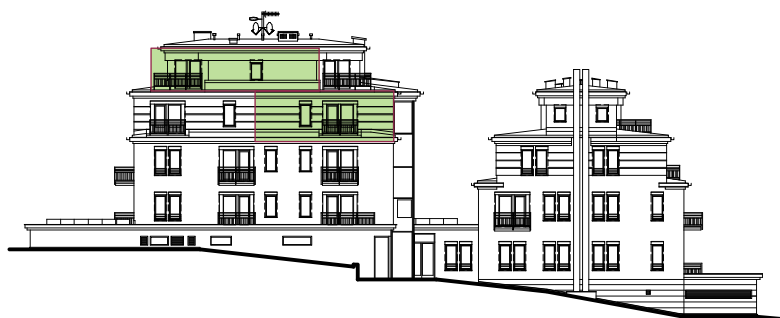
Číslo bytu

# A4.4 II.



Celková obytná plocha bytu 75,3 m<sup>2</sup>

Čistá podlahová plocha podle vyhlášky 366/2013 sb 59,7 m<sup>2</sup>



5NP

4NP

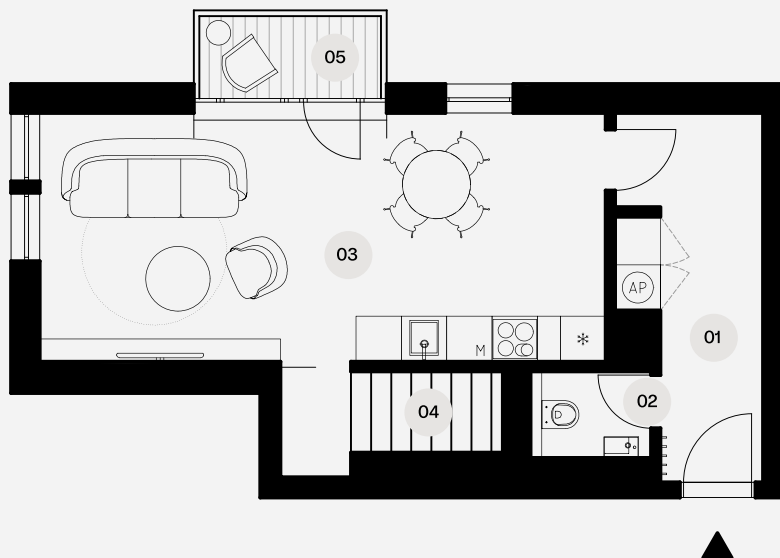
3NP

2NP

1NP

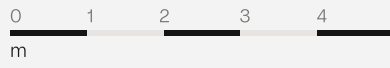
1PP

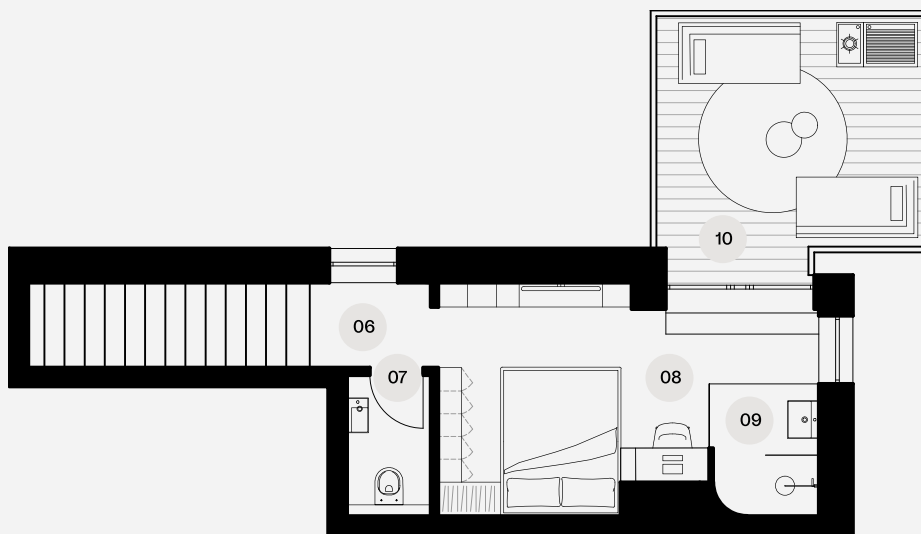
2PP



### Legenda místností 4NP

- 01 Vstupní chodba 8,1 m<sup>2</sup>
- 02 Toaleta 1,8 m<sup>2</sup>
- 03 Obývací pokoj + kk 25,4 m<sup>2</sup>
- 04 Schodiště 3,4 m<sup>2</sup>
- 05 Balkon 2,7 m<sup>2</sup>





## Legenda místností 5NP

06 Schodiště + chodba 6 m<sup>2</sup>07 Toaleta 2,1 m<sup>2</sup>08 Ložnice 21,1 m<sup>2</sup>09 Koupelna 2,4 m<sup>2</sup>10 Terasa 11,3 m<sup>2</sup>